



HIGH-PRECISION DENTAL 3D SCANNER

Achieve high-precision scanning
and effortlessly extract data





UP3D is a high tech company and the few companies in the world that are capable of developing a full dental CAD/CAM solution including software and hardware, from scanning, designing, to milling.

UP3D remains dedicated to our customers' requirements for training and support as well as for innovative, high-quality products that perform reliably. We have native technical support to deal with any after-sales problems to ensure that you can use our products happily.

Becoming the Global Leader in an Exceptional Digital Dental Ecosystem

120+

Countries and regions served

11,000+

Equipment installations worldwide

200+

R&D engineers

35%+

High investment in R&D

Upgraded Software, Easy Operation

UP1000 - The UP1000 is a high-precision dental 3D scanner independently developed by UP3D. It is equipped with dual 5-million-pixel high-definition cameras for data acquisition, offering scanning precision up to 5 micrometers. The data is accurate and reliable, specifically designed for precise dental restoration. It supports both dynamic and static articulator scans, utilizing innovative technology to enhance occlusal accuracy. Its color texture scanning seamlessly integrates with mainstream CAD software, offering convenient operation and significantly improving work efficiency. Providing high-quality solutions for dental restorations, the UP1000 is suitable for a wide range of complex cases, including denture scanning, fixed restorations, implant scan bodies, implant crowns, and bridges.

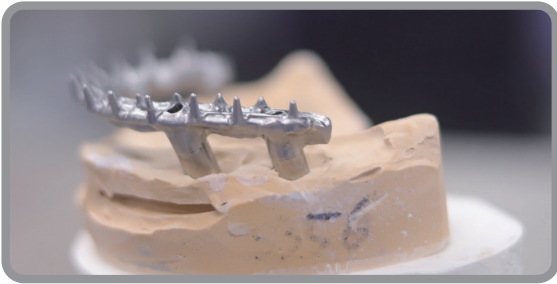
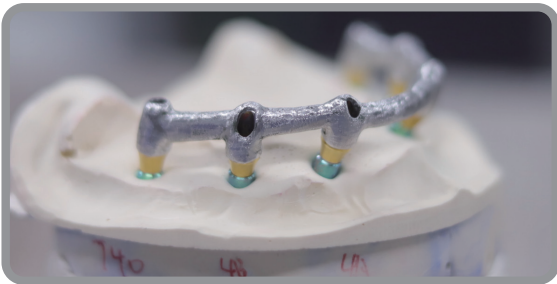


EMPOWERING DENTAL LABS TO STEP INTO THE DIGITAL ERA



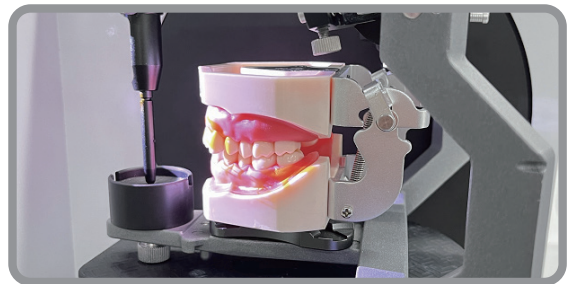
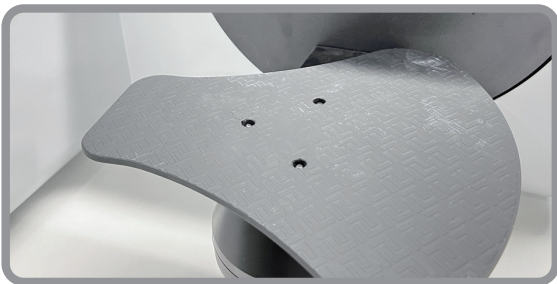
High-Definition, High-Precision Scanning Meeting the needs for accurate restorations

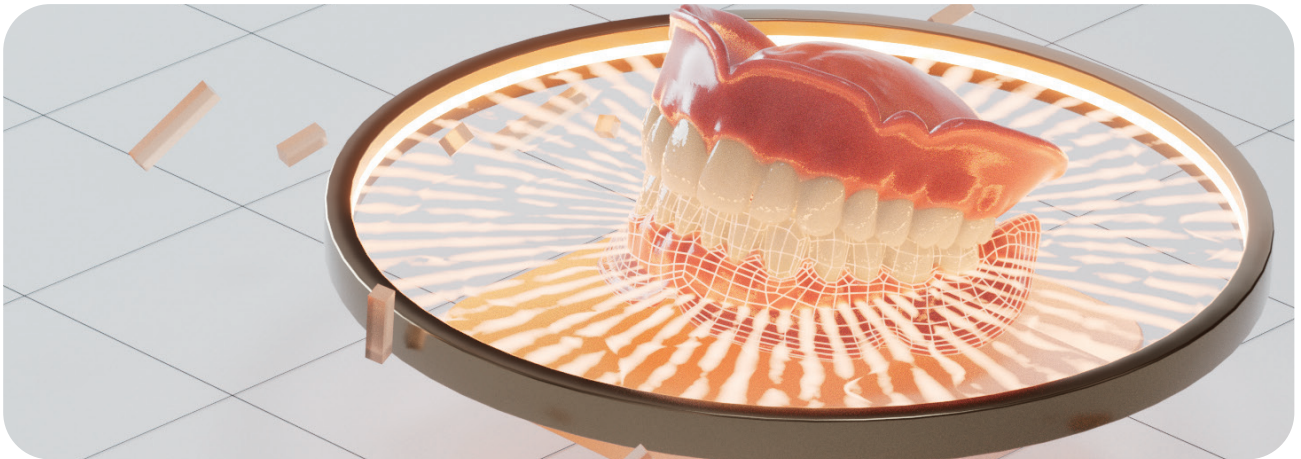
Equipped with dual 5-million-pixel high-definition cameras and achieving a precision of 5 micrometers, the scanner delivers highly detailed, accurate, and clear scanning results. It professionally meets the precise scanning requirements for implants, fixed and removable restorations.



Dynamic Articulator Scanning Enhancing occlusal accuracy

The UP1000 supports both dynamic and static articulator scanning modes. With upgraded hardware and software, it introduces innovative dynamic articulator scanning technology. This allows for a broader coverage of the full jaw model, ensuring precise occlusal matching and improving occlusal accuracy.





True Color Texture Data Effortless and accurate design

Supports color texture scanning, capturing hand-drawn margin lines and the edges of base teeth with clarity. This significantly restores the model, enhancing design accuracy.



Comprehensive Implant Scanning Support for complex restorations

Capable of scanning multiple scan bodies in one go, it's suitable for various complex cases including implant scan bodies, implant crown restorations, and bridges.



Open Format Compatibility Streamlined and efficient workflow

Facilitates the import and export of STL format files, seamlessly integrating with mainstream CAD software like exocad, 3Shape, and DentalWings. Exports in open formats like STL, PLY, OBJ, and U3M, simplifying data handling and enhancing workflow flexibility and efficiency.



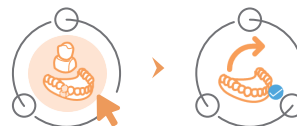
One-Click Shortcut Operations Convenient and smooth experience

The interface is equipped with multiple "shortcut keys" to bypass tedious settings and directly access common configurations, optimizing user experience and greatly enhancing work efficiency and scanning fluidity.



One-Click Intelligent Add Scan Reducing workload

Features an intelligent add scan function that automatically identifies and fills in missing parts of the model, eliminating the need for manual angle searching. With one click, precise add scanning is achieved, significantly simplifying the operation process and noticeably improving work efficiency.



One-Click Free Switching Flexible and convenient scanning

enables the user to freely switch scanning steps with just a mouse click, jumping to the required scanning step without needing to start over. This breaks free from the constraints of traditional scanning workflows, making the process simple and convenient.

Technical Specifications

UP1000

Dimensions	520*295*347 (mm)
Weight	15kg
Camera	Dual 5-megapixel
Accuracy	5 micrometers
Projection	Custom blue light, supports multi-color scanning
Interface	USB 3.0
Output Format	STL, UM, PLY, OBJ
Power Supply	AC110-240V, 50Hz
Axis	2-axis
Texture Mode	Point cloud coloring
Structure Mode	Open
Feature	Precision scanning
Scanning Method	Non-contact blue light scanning





 www.up3ds.com

 info@up3d.cn

 0755-26983202

**Becoming the Global
Leader in an Exceptional
Digital Dental Ecosystem**