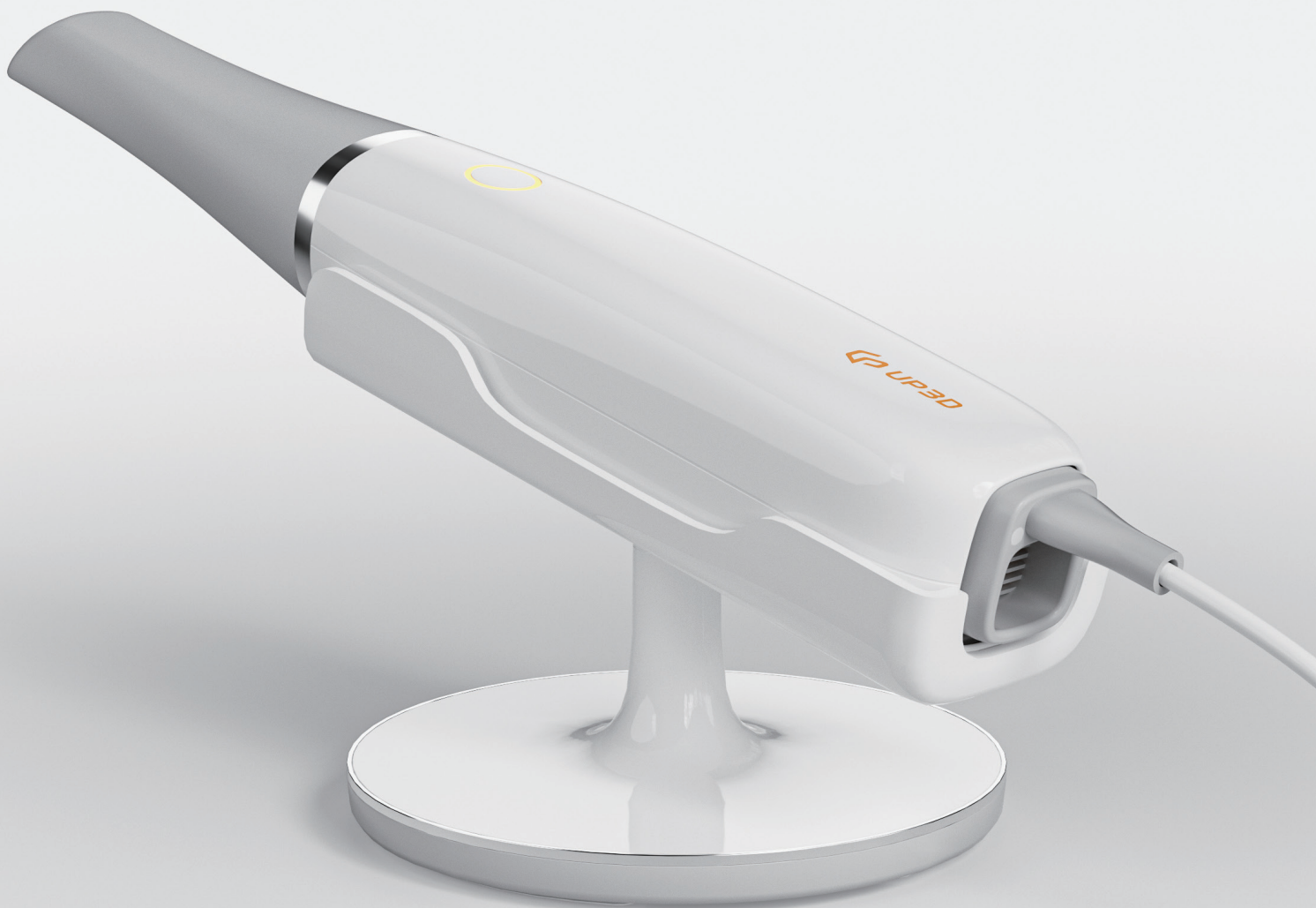


# INTRAORAL SCANNER

The First Step to Same-Day Dentistry





UP3D is a high tech company and the few companies in the world that are capable of developing a full dental CAD/CAM solution including software and hardware, from scanning, designing, to milling.

UP3D remains dedicated to our customers' requirements for training and support as well as for innovative, high-quality products that perform reliably. We have native technical support to deal with any after-sales problems to ensure that you can use our products happily.

# Becoming the Global Leader in an Exceptional Digital Dental Ecosystem

**120+**

Countries and regions served

**11,000+**

Equipment installations worldwide

**200+**

R&D engineers

**35%+**

High investment in R&D

# The All-in-One Digital Dentistry Solution Shortcut to Digital Treatment

**UP600** - The UP600, independently developed by UP3D, is a cutting-edge intraoral scanner. With its sleek design and comprehensive view, it employs intelligent technology for high-speed imaging and lifelike color reproduction. This device replaces traditional impression taking method to capture intraoral data efficiently and accurately. It facilitates the initial step towards immediate restoration, providing dentists with enhanced digital diagnostic and treatment services. Moreover, it supports effective collaboration between dentists, dental technicians and patients, achieving a more comfortable, precise, efficient, and realistic digital dental experience.



## Chairside Immediate Restoration



## Clinic and Dental Lab Collaboration



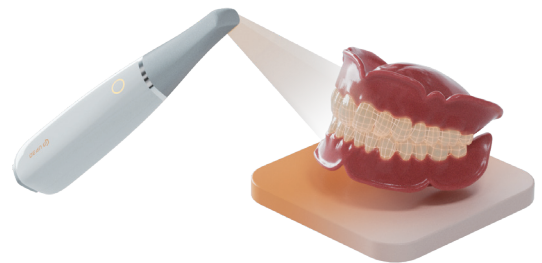
## Fast and Smooth Scanning Efficient Clinical Diagnostics

With a scanning speed of 22-26 frames per second, the UP600 can complete a full-mouth scan in under 2 minutes, eliminating delays and significantly improving diagnostic efficiency.



## AI-powered Scan Filtering Removes Irrelevant Data

Using AI technology, the scanner accurately identifies and filters out irrelevant data such as soft tissue from the cheeks and tongue, reducing interference and enhancing the accuracy and speed of the scan.



## Motion Sensing Technology Effortless Sterile Operation

Motion sensing technology to replace some mouse functions, reducing contact with multiple devices, lowering the risk of cross-infection, and enhancing the convenience and efficiency of model taking.



## Flexible Implant Scanning Options Enhance Patient Experience

The scanning software allows for flexible selection of implant scanning processes. This diversity of options increases operational flexibility and avoids discomfort caused by repeated removal and attachment of the scanning post, enhancing patient satisfaction and experience.



## Clinical Toolkit Support

The scanner comes with a comprehensive clinical toolkit, supporting rapid chairside examination of oral scan data and significantly improving the quality of tooth preparation. It also facilitates real-time and effective communication between dentists and dental technicians, ensuring efficiency and quality in later design and denture fabrication, offering unparalleled convenience and advantages to users.



### Quantitative Measurement Tools

The 2D section feature provides precise interocclusal distance measurements between two points, assisting the restoration dentist in more accurate tooth preparation.



### Occlusal Distance

The occlusal distance mapping feature visually displays the size of the occlusal space through color differentiation, helping to verify if the space is suitable for restorative fabrication.



### Undercut Detection

The undercut detection feature visually indicates the degree of undercut through different colors, restoration design.



### Touchscreen Compatibility

Equipped with a touchscreen for intuitive software interaction and sensitive human-machine communication, compatible with all-in-one PCs.



### Automatic Anti-Fog Heating

Ensures data integrity by preventing fogging of the lens from patient's breath during scanning, thus maintaining scanning quality.



### Open-Format Data Output

Exports in open formats like STL, PLY, OBJ, compatible with various design software including UP3D, exocad, 3Shape, and more.



### Texture Scanning

Accurately reproduces the colors inside the mouth, ensuring clarity at the gingival margin, unaffected by saliva.



### Detachable Scanner tip

Easy to replace and supports sterilization at high temperatures and pressures.



### Powder-Free Operation

Eliminates the need for powder, simplifying the scanning process and enhancing both scan smoothness and patient comfort.



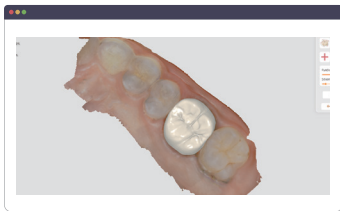
### One-Button Control

Simplify the operation process with one-button control on the scanning handle, allowing seamless switching between scanning stages.



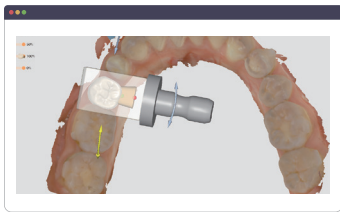


**UP3D Clinic Intelligent System  
UPDENTAL Platform**



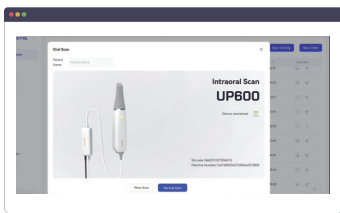
**Cloud Order Management & Automatic Data Storage**

Enables rapid scan transmission, secure storage of patient information and scan data, and efficient order tracking and management. Scan results are immediately available and can also be optionally stored in the cloud, ensuring flexible data management.



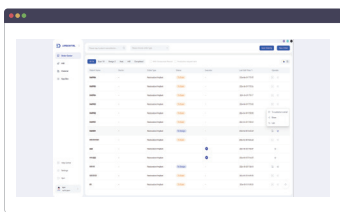
**Collaborative Integration with Chairside & Labside**

Links with chairside CAD/CAM software or labside UPCAD software, offering the convenience of completing design, layout, and milling in one go. This significantly reduces the waiting time for restorations, optimizing patient experience.



**Quick Order Scan**

With just one click on "Direct Intraoral Scan," you can swiftly initiate an intraoral scan and create a new treatment order, greatly simplifying clinical procedures.



**Scan Data Transmission & Sharing**

Facilitates the selection of different data transmission methods for quick and efficient sharing of intraoral scan results.

## APP BOX Software Integration

App Box offers dental professionals a one-stop clinical software solution, simplifying workflows and enhancing efficiency. Through this platform, users can easily install, access, and manage additional function software, supporting the entire process from consultation and design to treatment for both clinicians and patients.

---

### 01. Ortho Simulation

Quickly achieves intelligent tooth segmentation and automatic tooth arrangement, assisting dentists in rapidly simulating orthodontic treatment plans. This provides patients with a clear understanding of post-treatment outcomes, facilitating dentist-patient communication.

### 02. Oral Health Report

Immediately after an intraoral scan, the health status of teeth is annotated, and a health report is generated with the click of a button. This allows patients to more intuitively understand their oral health status.

### 03. UPAnalyser

Dentists can use the orthodontic measurement software "UPAnalyser" to quickly assess the position, angle, and relationships between teeth, better planning treatment strategies and effectively monitoring orthodontic progress.

### 04. Model Editor

Rapidly generates bases and includes a variety of tools, capable of directly producing STL format 3D printing model data. This reduces software switching, offering a one-stop solution for scanning and printing.



# Technical Specifications

## UP600

Dimensions	260×48.3×44 (mm)
------------	------------------

---

Weight	308g
--------	------

---

Accuracy	20um-30um
----------	-----------

---

Scan Field	14.5*16mm
------------	-----------

---

Depth of Field	18mm
----------------	------

---

Full Arch Scan Time	<2min
---------------------	-------

---

Scanner Head	45°, 18mm*20mm
--------------	----------------

---

Data Output Formats	STL, PLY, OBJ
---------------------	---------------

---

Voltage Adaptation	Input Voltage: DC12V, 3.34A
--------------------	-----------------------------

---



 [www.up3ds.com](http://www.up3ds.com)

 [info@up3d.cn](mailto:info@up3d.cn)

 0755-26983202

**Becoming the Global  
Leader in an Exceptional  
Digital Dental Ecosystem**